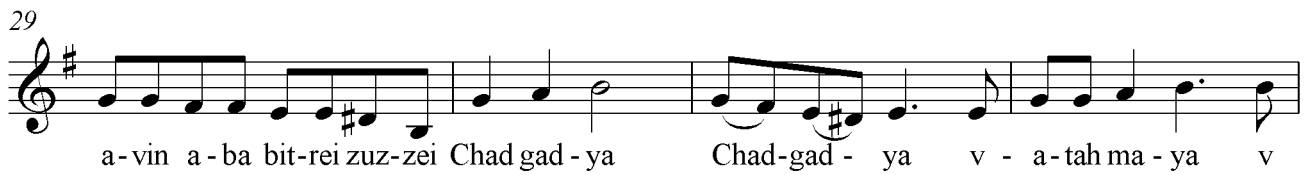



# Chad Gadya Sara Mitchell



45  

 hi ka l chal-ba d - na-shach l-shun-ra d -ach-la l-gad-ya diz - a-vin a-ba bit-rei zuz-zei

49  

 Chad gad - ya Chad-gad - ya v - a-tah ha-sho-chet v - sha-chat l - to-rah d -

53  

 sha-tah l-ma-ya d - cha-vah l-nu-ra d sa-raf l-chut-ra d -hi ka l chal-ba d -

57  

 na-shach l-shun-ra d -ach-la l-gad-ya diz - a-vin a-ba bit-rei zuz-zei Chad gad-ya

61  

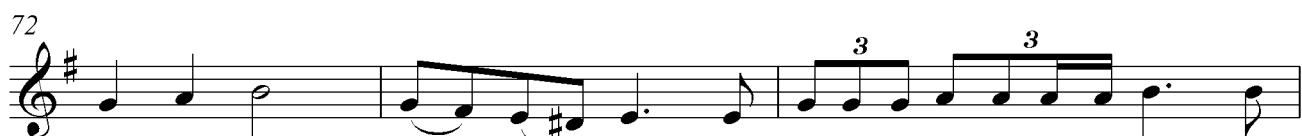
 Chad - gad - ya v - a - tah ma-lach ha-ma-vet v - sha-chat l - sho-cheit d

64  

 sha-chat l - to-rah d - sha-tah l-ma-ya d -cha vah l-nu-ra d sa-raf l-chut-ra d -

68  

 hi ka l chal-ba d - na-shach l-shun-ra d -ach-la l-gad-ya diz - a-vin a-ba bit-rei zuz-zei

72  

 Chad gad - ya Chad - gad - ya v - a-tah-Ha-ko-desh ba-ruch hu v -

75  

 sha-<sup>3</sup>chat l-mal-<sup>3</sup>ach ha-ma-vet d - sha-chat l - sho-chet d - sha-chat l - to-rah d

78  

 sha-tah l-ma-ya d -cha vah l-nu-ra d sa-raf l-chut-ra d -hi ka l chal-ba d -

82  

 na - shach l - shun - ra d - ach - la l - gad - ya diz -

84

The image shows a single line of musical notation on a five-line staff. The key signature is one sharp (F#), and the time signature is not explicitly shown but appears to be 4/4. The melody consists of the following notes: G4 (quarter), A4 (quarter), B4 (quarter), C5 (quarter), B4 (quarter), A4 (quarter), G4 (quarter), F#4 (quarter), E4 (quarter), D4 (half). The lyrics are: "a - vin a - ba bit - rei zuz - zei Chad gad - ya chad gad - ya". The word "Chad" is aligned with the G4 note, "gad - ya" with the A4 note, "chad" with the B4 note, and "gad - ya" with the C5 note. There are slurs under the "chad" and "gad - ya" pairs. The staff ends with a double bar line.